

# WELCOME!

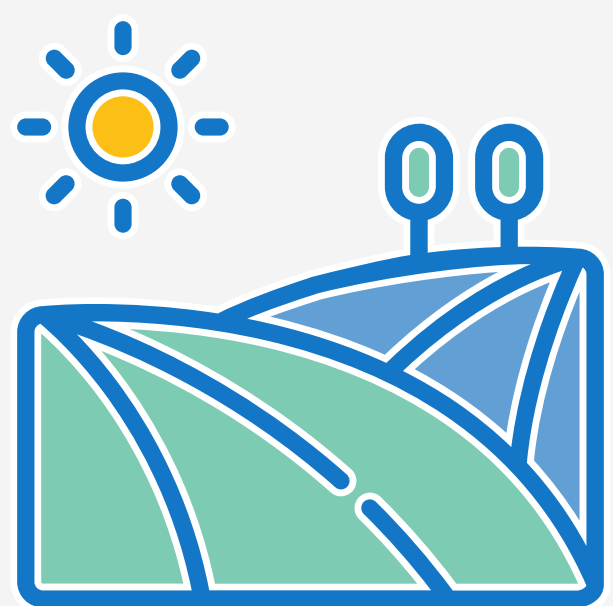
Please **sign in, grab a handout, and work your way around** the different stations to **learn about the Groundwater Management Plan.**



**PAPIO**  
MISSOURI RIVER  
NATURAL RESOURCES DISTRICT



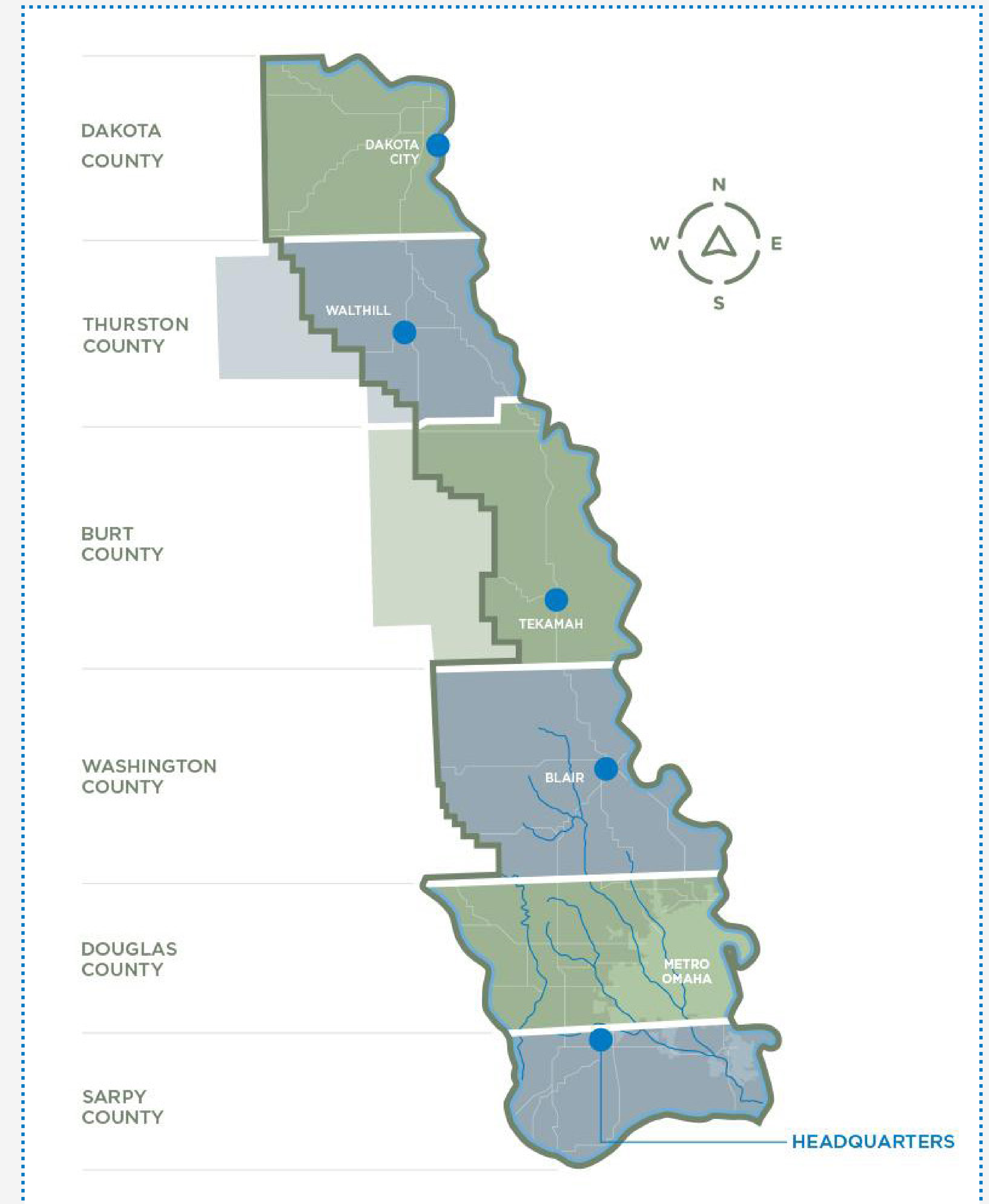
**The Papio-Missouri River Natural Resources District** (Papio NRD) is **one of 23** NRDs statewide. It is located in eastern Nebraska, and includes Douglas, Sarpy, Washington, and Dakota counties, as well as portions of Burt and Thurston counties.



It consists of over **one million acres** and approximately **850,000 residents**.



The District covers **30 communities** in both rural and urban areas.





A Groundwater Management Plan (GMP) is **required for each NRD** per Nebraska's Groundwater Management and Protection Act.



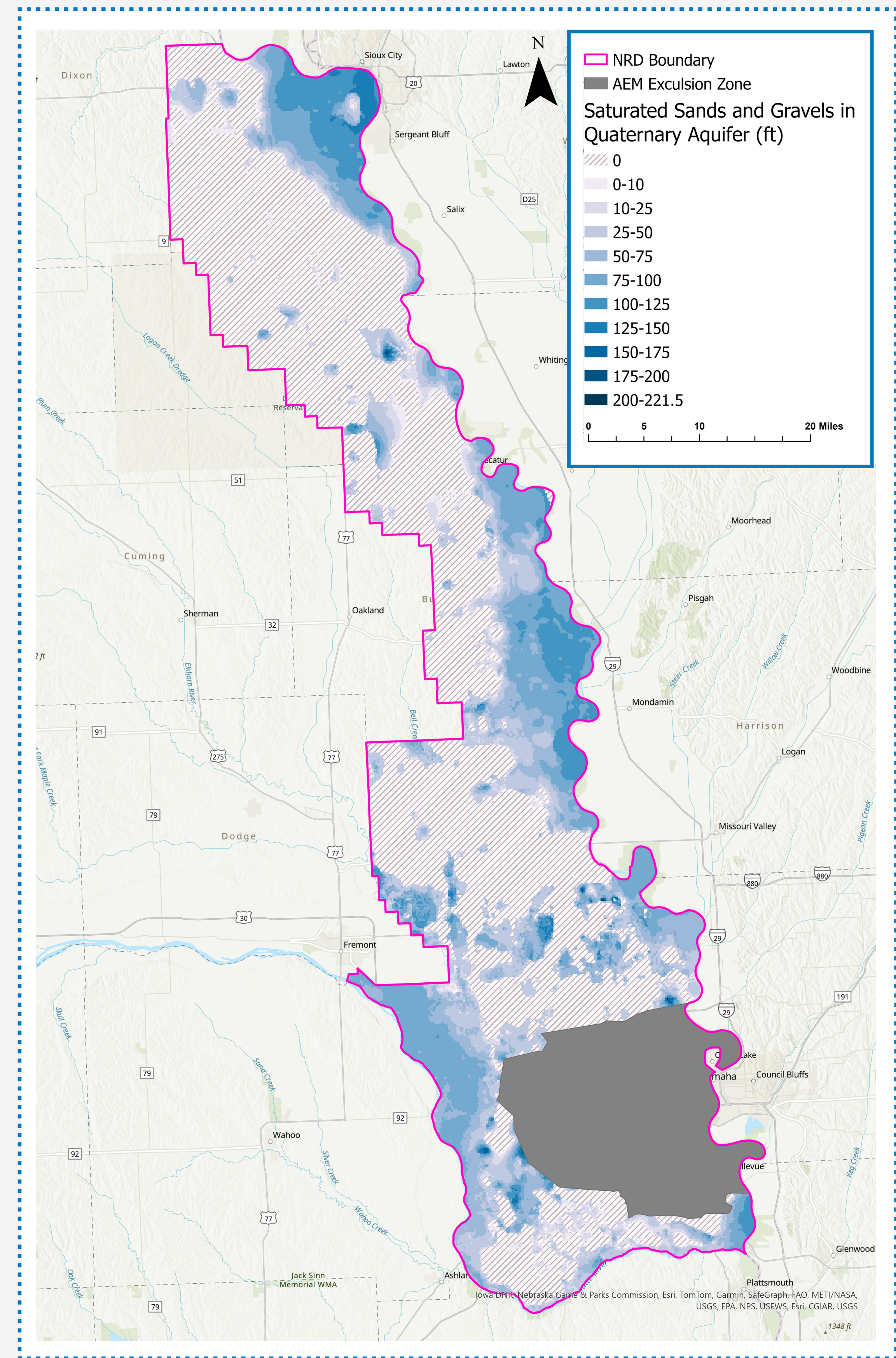
A GMP is a **strategic document** that outlines **long-term goals, strategies** and **actions** to monitor and maintain groundwater quality and quantity in an NRD.



The GMP is based on the best available information on the **quantity** and **quality** of groundwater within the NRD.



The GMP should **reflect** the unique **hydrogeology** and **limits** of water supply in each NRD.



Primary Sand/Gravel Aquifers in the Papiro NRD

# What Is Being Done Now?

Papio NRD's **Groundwater Management Plan (GMP)** was last updated in

# 2018

Papio NRD has been monitoring groundwater for changes:



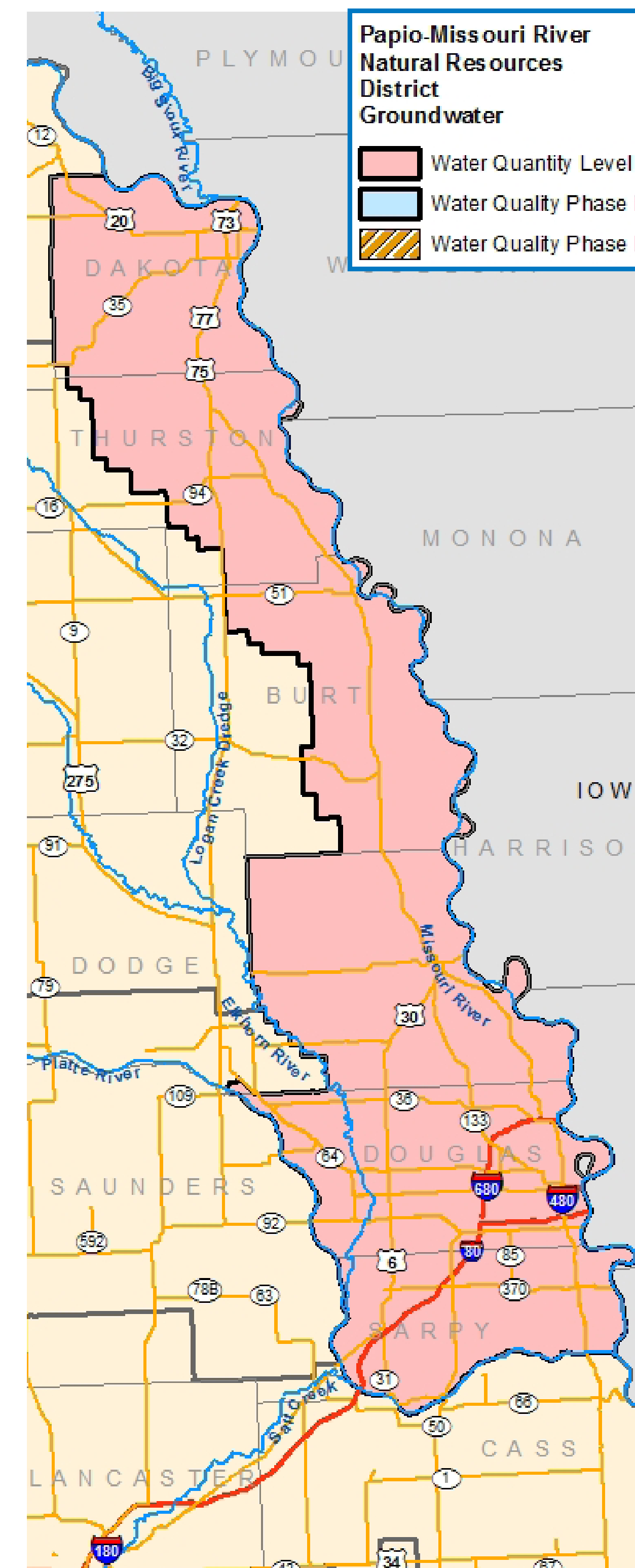
Groundwater **quantity** began in 1978



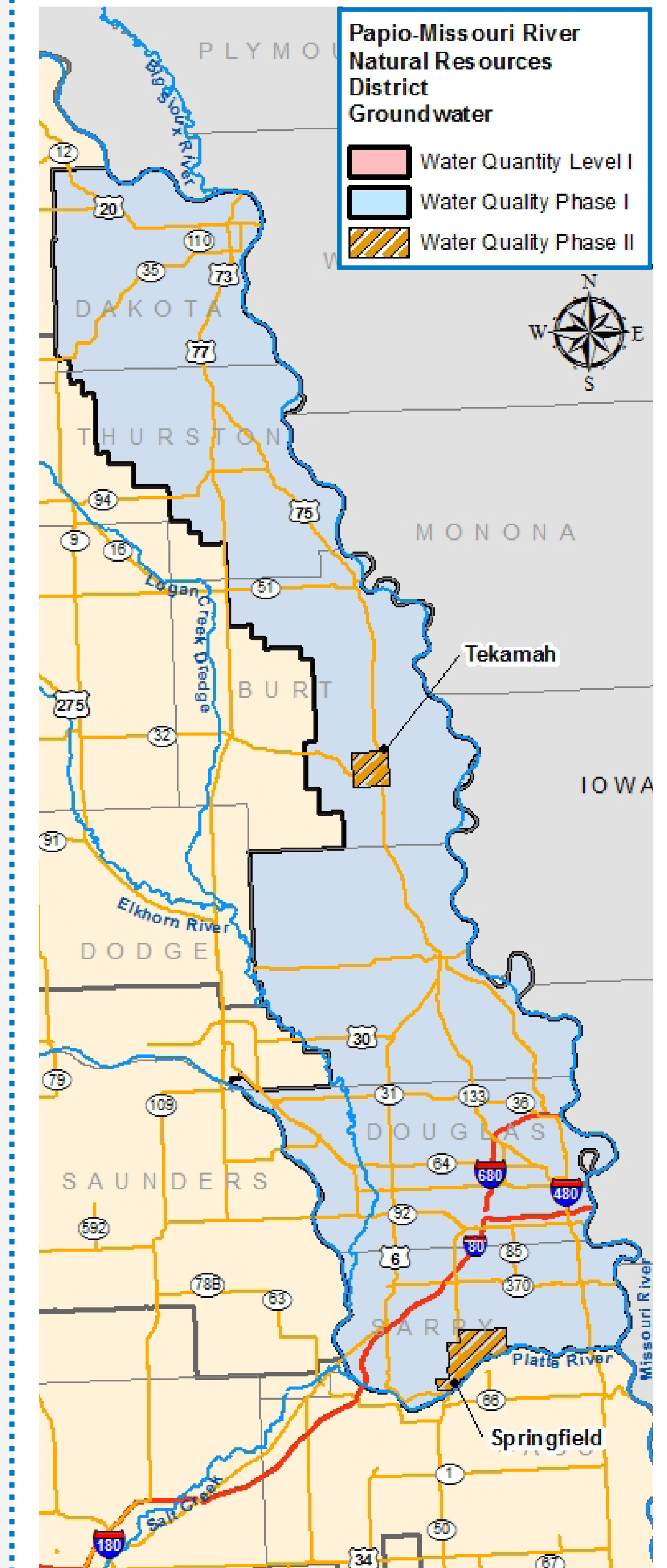
Groundwater **quality** began in 1992

*Portions of the Papio NRD are in a Phase II Groundwater Quality Management Area, while all areas of the District are in a Level I Groundwater Quantity Area.*

## Water Quantity Groundwater Management



## Water Quality Groundwater Management



Current Papio NRD Groundwater Management Areas

# Why Are We Doing This Now?



**Incorporate** input from everyone who drinks or uses groundwater.



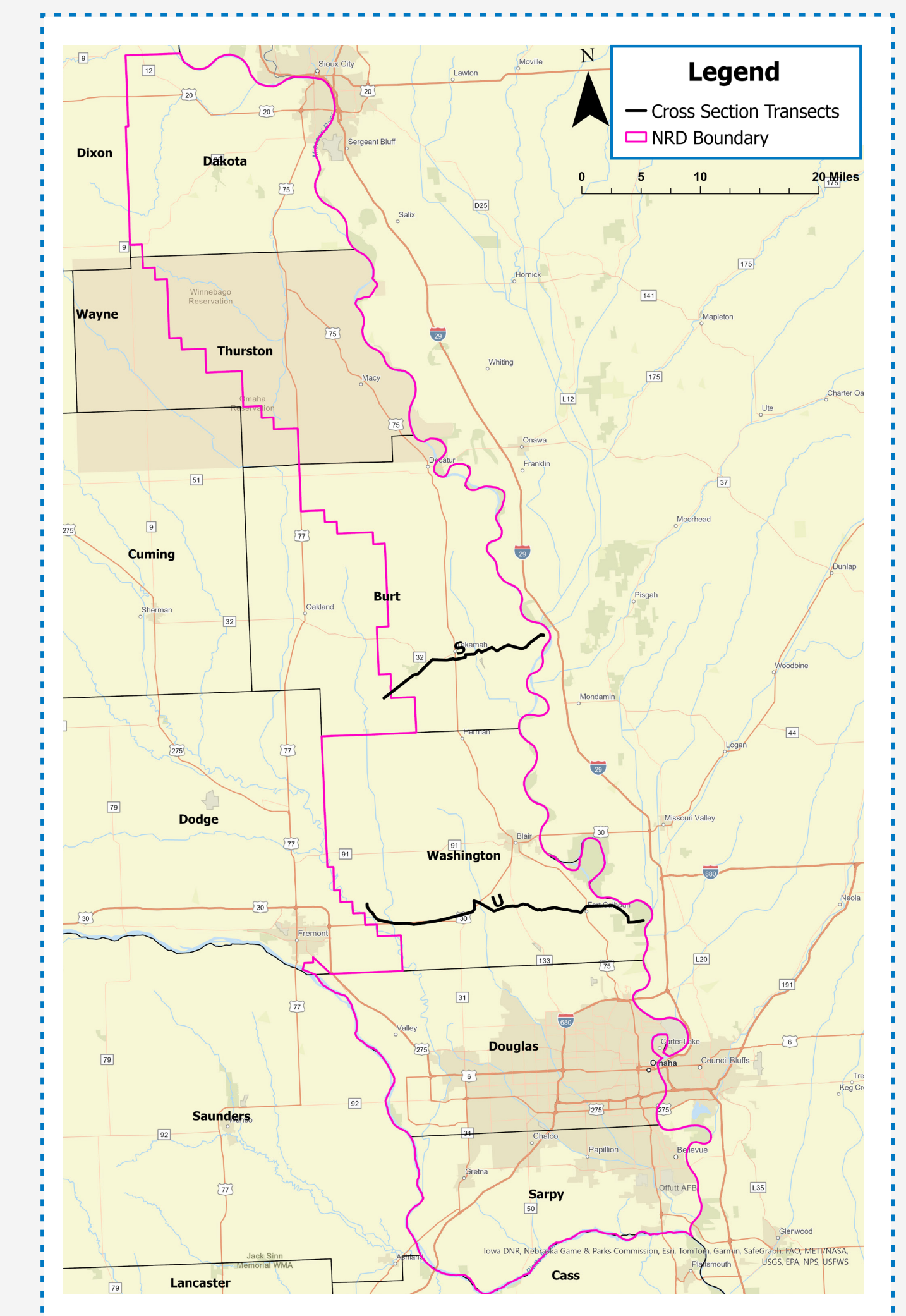
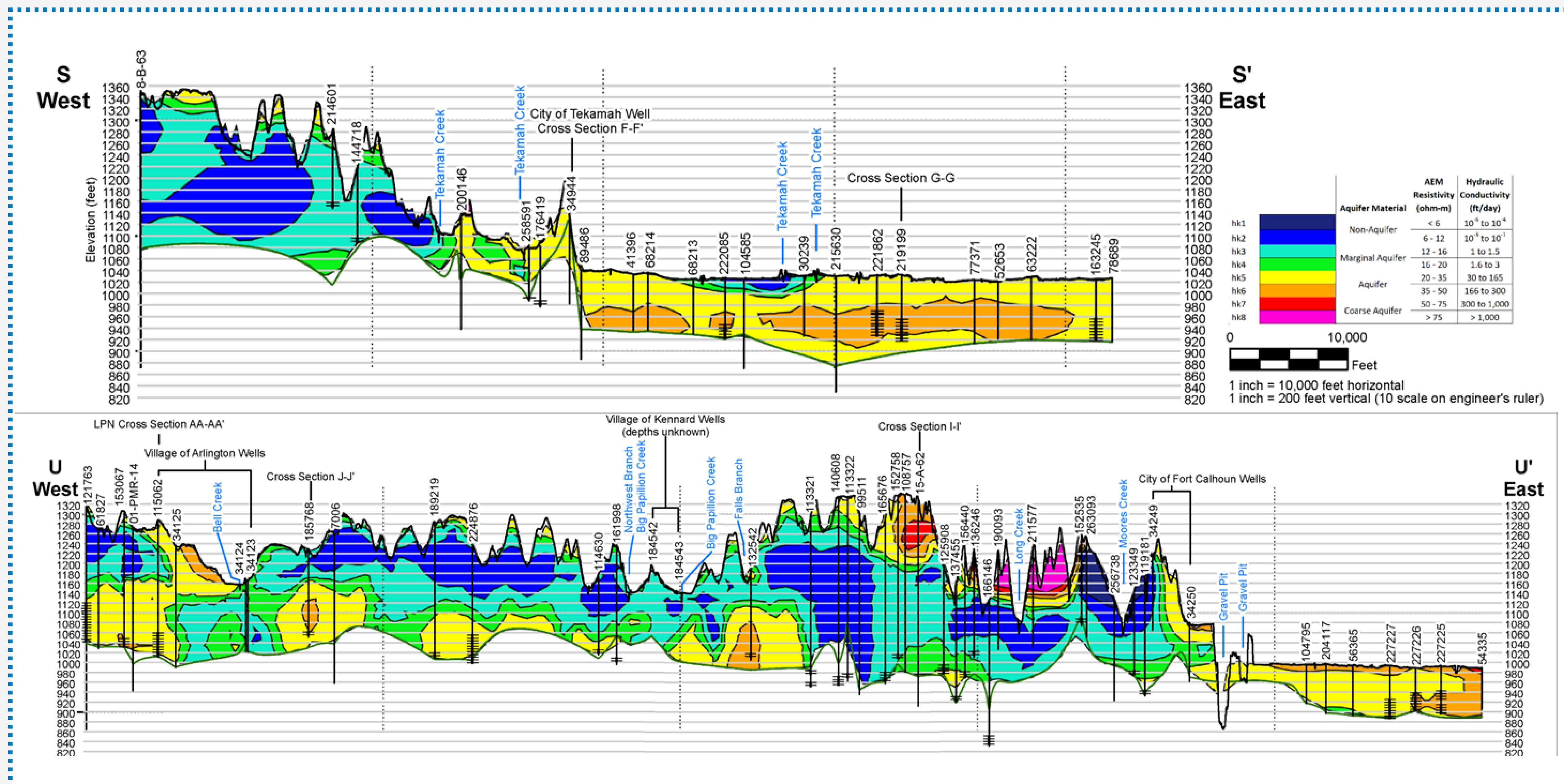
**Consider** latest research on public health, water quality, and healthy soils.



**Keep** the plan up to date with the latest available data and technology.



**Opportunity** to combine the latest management strategies with the best available information.



Geologic Cross Section Locations

# Strategies the Papio NRD is Considering



**Increased** reporting of groundwater use, including flow meters on new or replacement irrigation, commercial and industrial wells.



**More** continuous monitoring of groundwater elevations.



**Additional** observation wells to monitor quantity and quality more consistently.



**Update** triggers for various Phases or Levels of Groundwater Management Areas:

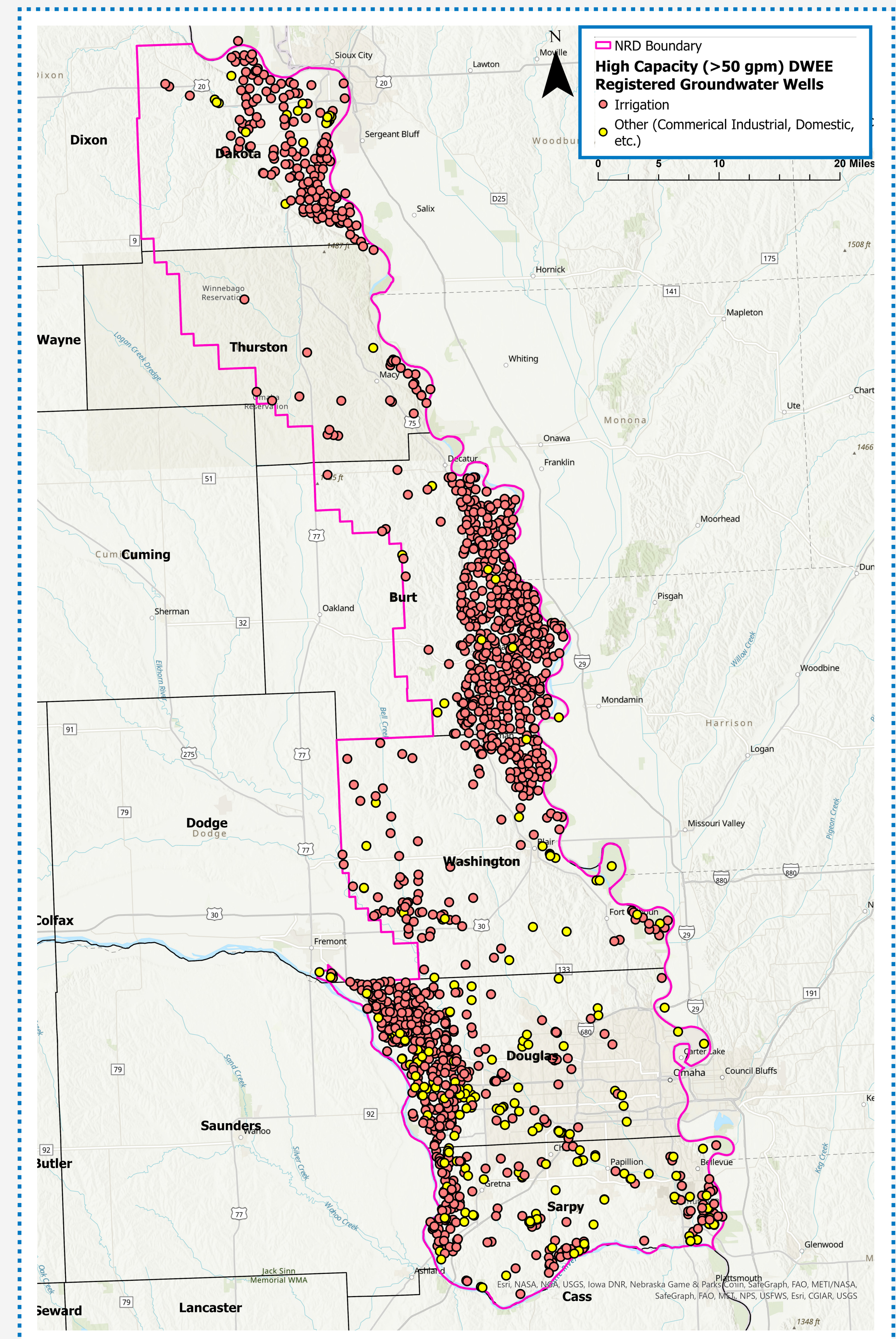
- *Should they be updated to reflect nearby NRDs?*
- *Do they need to be more stringent?*



**Update** the GMP to reflect current partnerships and water management plans, including the Lower Platte River Drought Plan and Basin Plan, as well as the Papio NRD's Integrated Management Plan.



**Certify** Irrigated Acres across the entire Papio NRD.



Existing High Capacity Wells in the Papio NRD

***Add a post-it describing your **issues or concerns**, **what you would like to see** in the updated GMP, and/or **what you think** of the potential changes.***

Example:

How will these changes effect the area long term?

# Station 1

**Where We've Been**



**PAPIO**  
MISSOURI RIVER  
NATURAL RESOURCES DISTRICT

# Station 2

## What We're Doing



**PAPIO**  
MISSOURI RIVER  
NATURAL RESOURCES DISTRICT

# Station 3

**Where We Want to Go**



**PAPIO**  
MISSOURI RIVER  
NATURAL RESOURCES DISTRICT